

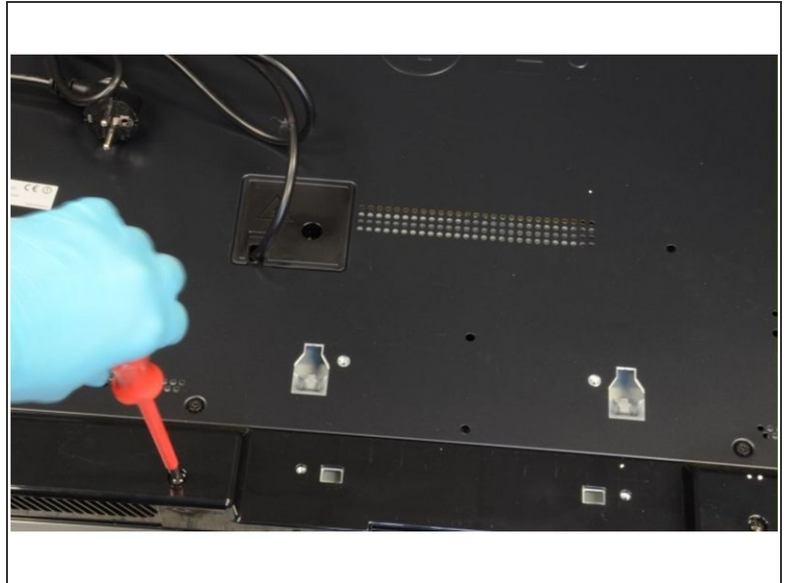
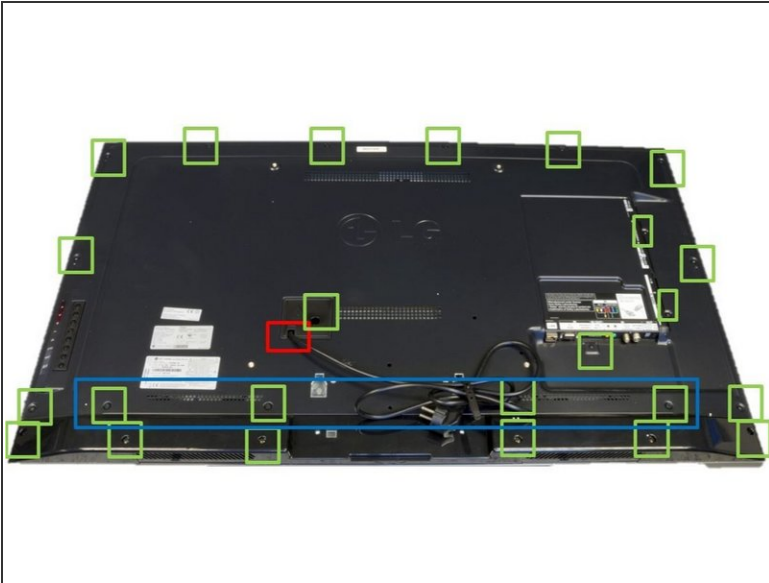


LG 47LM760S TV set

Written By: Amaia

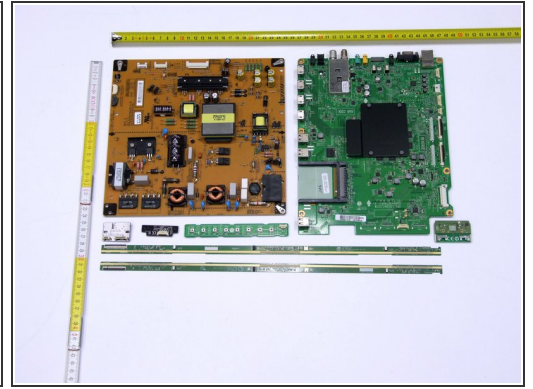
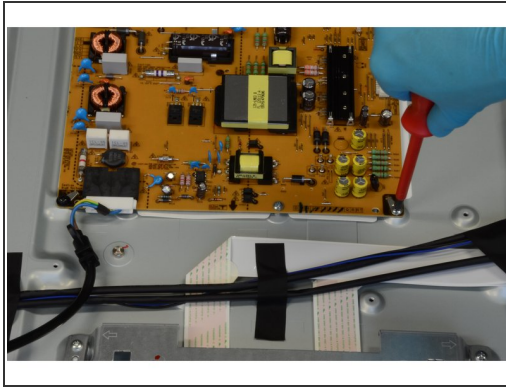
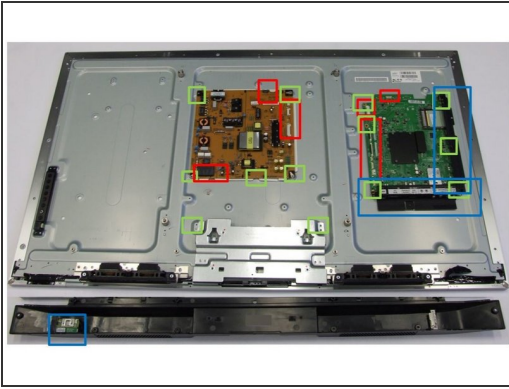


Step 1 — Opening



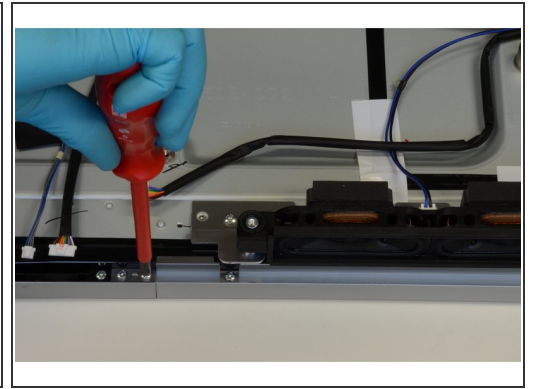
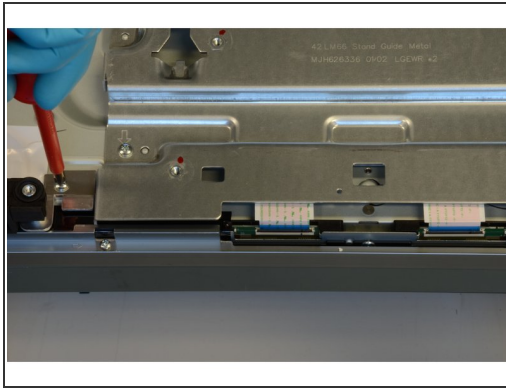
- Start the TV opening from the back side.
- Using PH#2 screwdriver, begin to loose the twenty-four screws located all over the back-casing (highlighted in green boxes).
- Manually pry open the interconnection between the two plastic pieces to loose the four clips.
- Disconnect the connectors from cables and buttons.
- Remove the plastic back cover.

Step 2 — Removal of Printed Circuit Boards (PCB) 2/2



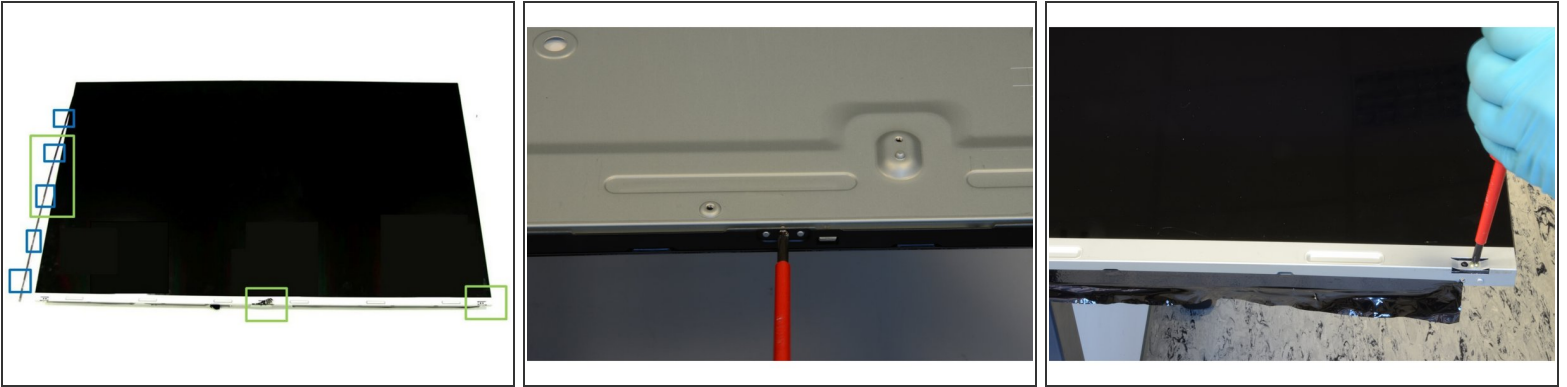
- Remove cables: Disconnect all fifteen connectors (highlighted in red boxes) and remove the tapes used to fix the cables to the metal casing.
- To remove the PCBs use PH#2 screwdriver (thirteen screws marked in green).

Step 3 — Obtaining of Display Unit



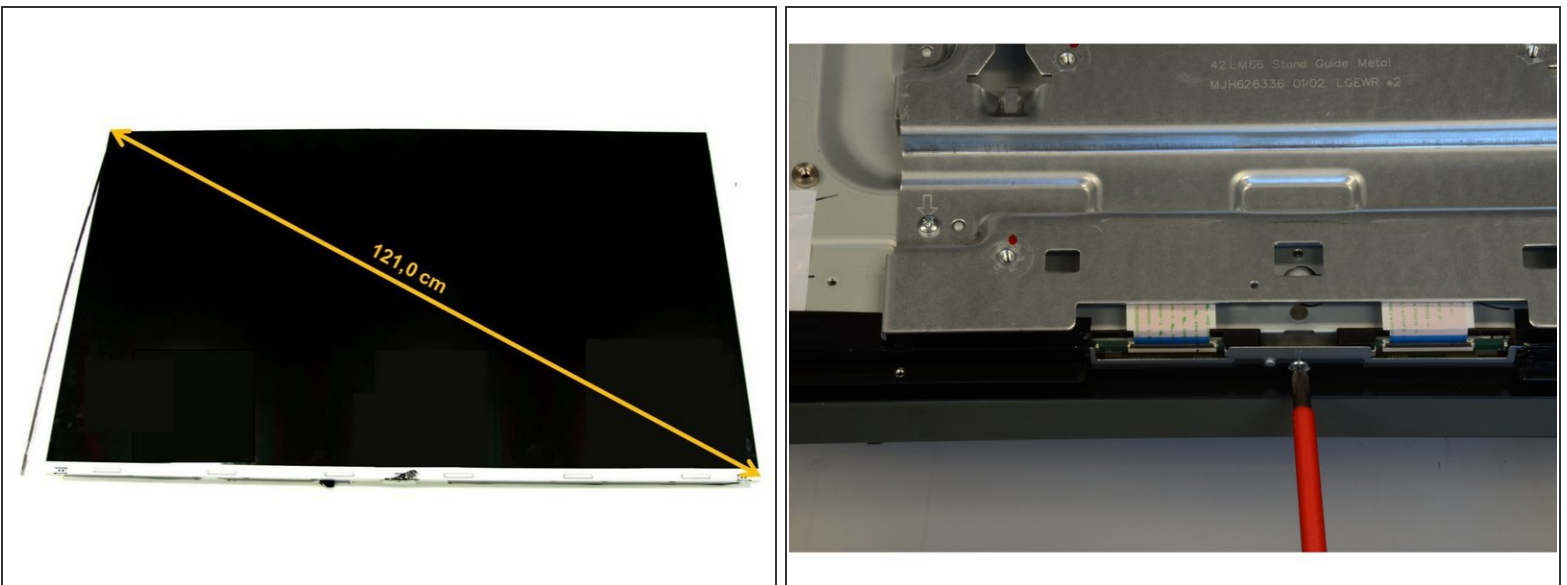
- Using PH#2 screwdriver, loose four screws to remove the speakers.
- Then, use the same tool to loose fourteen screws that fix the metallic mounting to protect the PCBs.

Step 4 — Removal of Front Frame



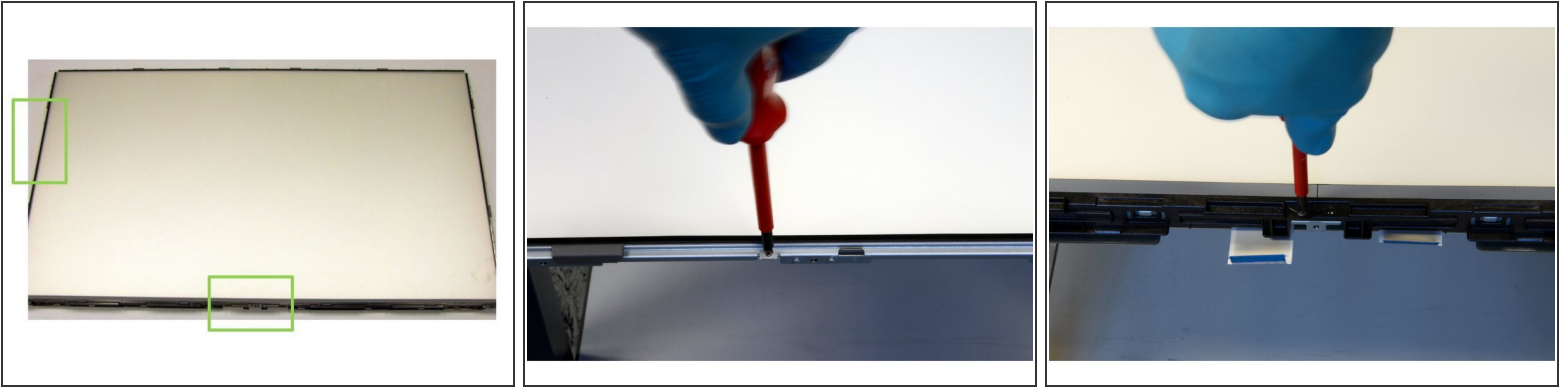
- Loose the adhesives securing the front frame and carefully turn the screen up.
- To remove the front frame, unscrew the twenty-four PH#1 screws (starting point marked in green).

Step 5 — Removal of LCD Panel



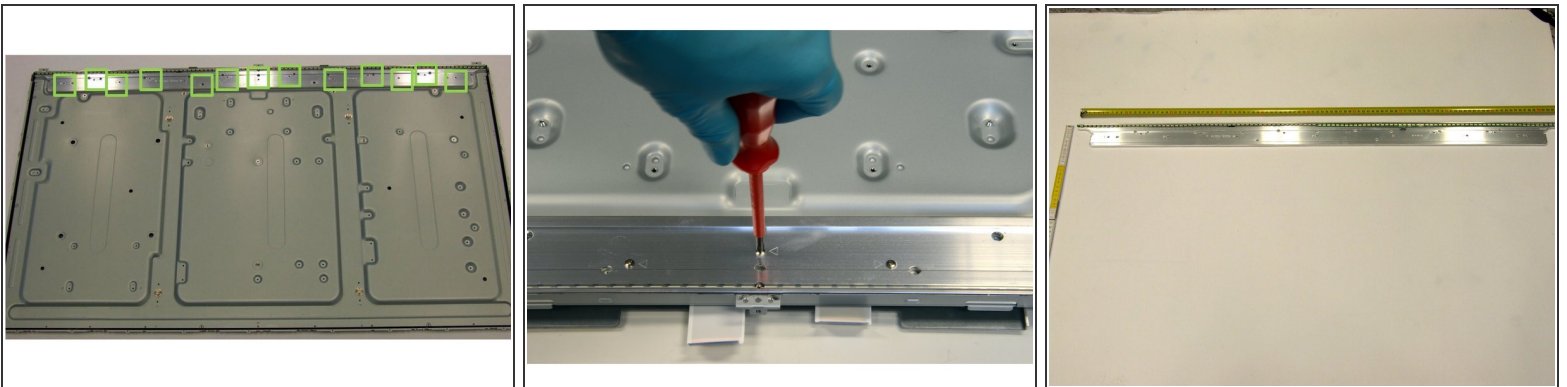
- Detach manually the two connectors of the back side and remove the LCD panel.

Step 6 — Removal of Front Frame



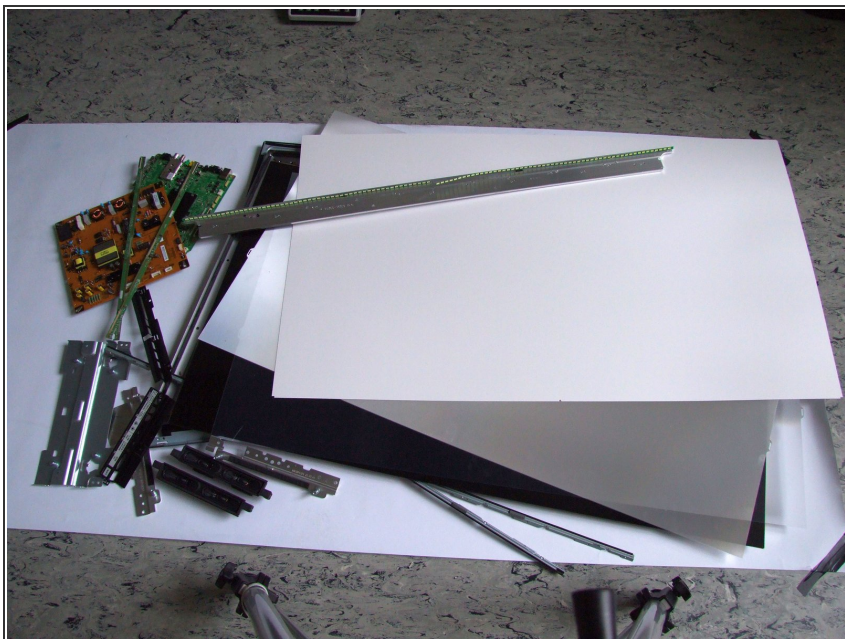
- Using PH#1 screwdriver, loose twenty-two screws in two steps:
 - First, remove the metal frames that cover the sides and the top of the unit.
 - Second, unscrew the bottom part and loose eight clips in order to take it out.
- The polarizer foils can be removed as well.

Step 7 — Removal of Backlights (LED)



- Using PH#1 screwdriver, loose thirteen screws (marked in green) and remove the metal casing with two PCBs.
- Using slotted screwdriver, remove the PCBs from the metal casing. Note that this step is destructive.

Step 8 — TV Dismantling Fractions



- All fractions obtained after TV dismantling.