

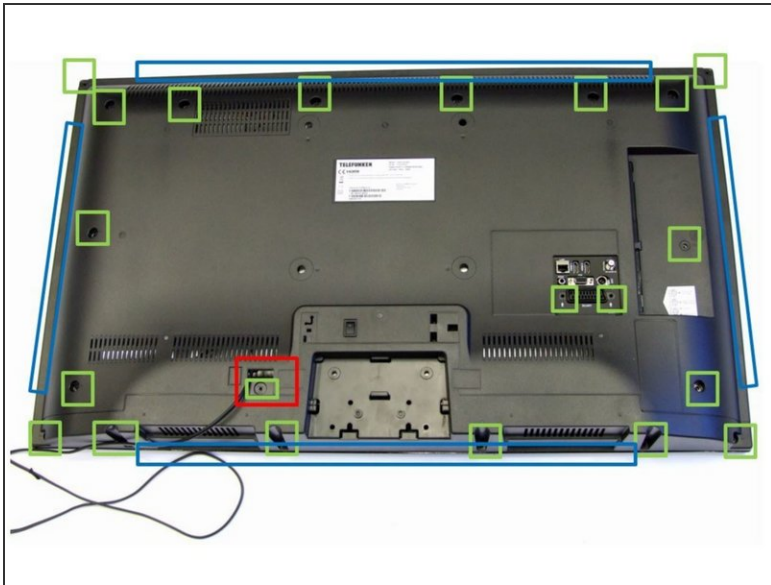


Telefunken T39EX1425 TV set

Written By: Amaia

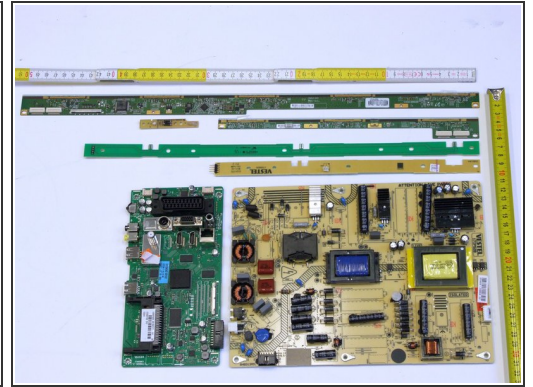
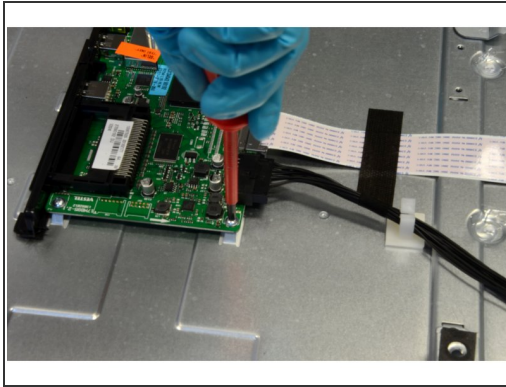
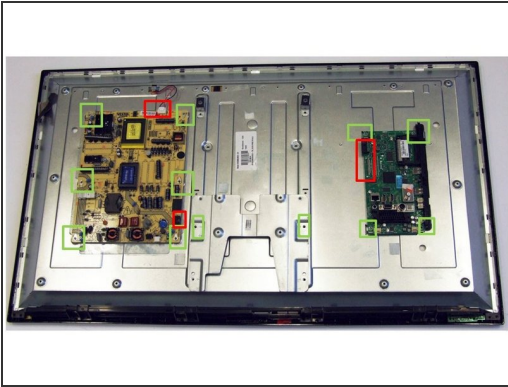


Step 1 — Opening



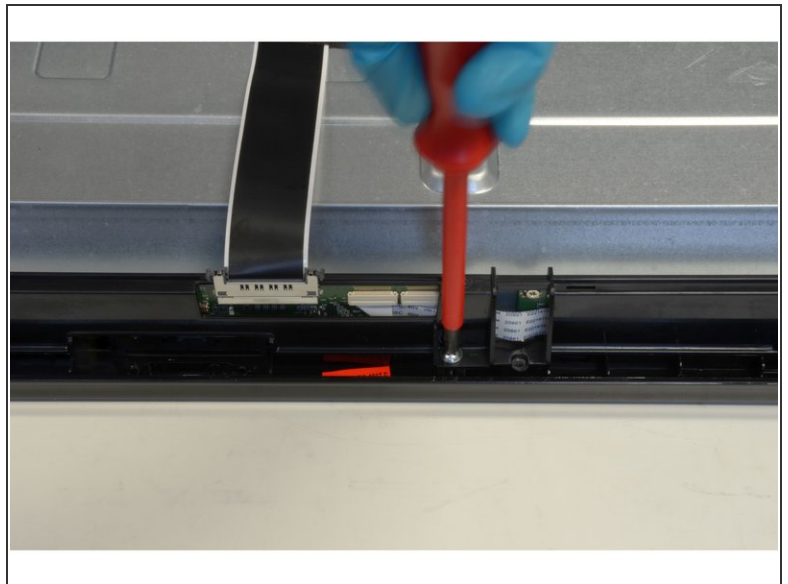
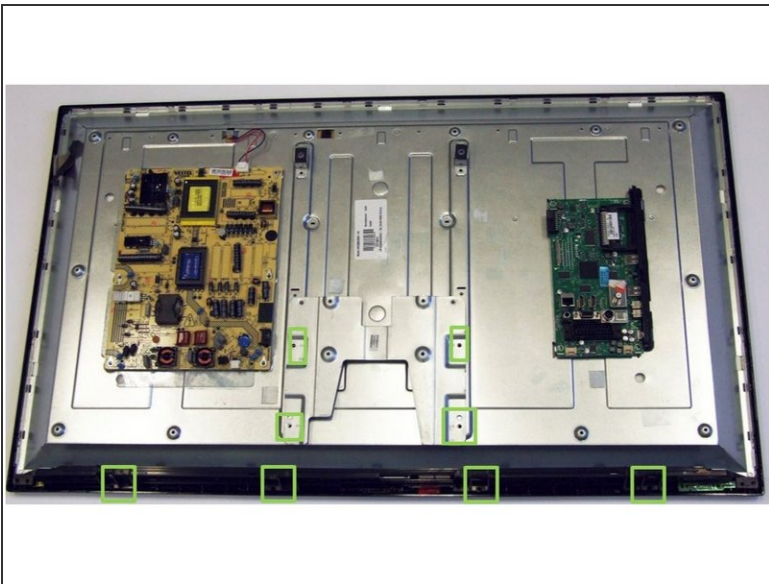
- Place the TV screen side-down.
- Using PH#2 screwdriver, begin to loose the screws of the back-casing (highlighted in green boxes).
- Using PH#1 screwdriver, finish loosening the last two screws which are located in the connectors' square.
- Manually pry open the back-casing from the front-frame.
- Disconnect connectors from cables and switchers.
- Remove the plastic back-casing.

Step 2 — Removal of Printed Circuit Boards (PCB)



- Remove cables: Disconnect four connectors (highlighted in red boxes) and two clips, and trip off the tapes used to fix cables to the metal casing.
- Remove Printed Circuit Boards (PCB): Using PH#1 screwdriver, begin to loose the ten screws (highlighted in green boxes).

Step 3



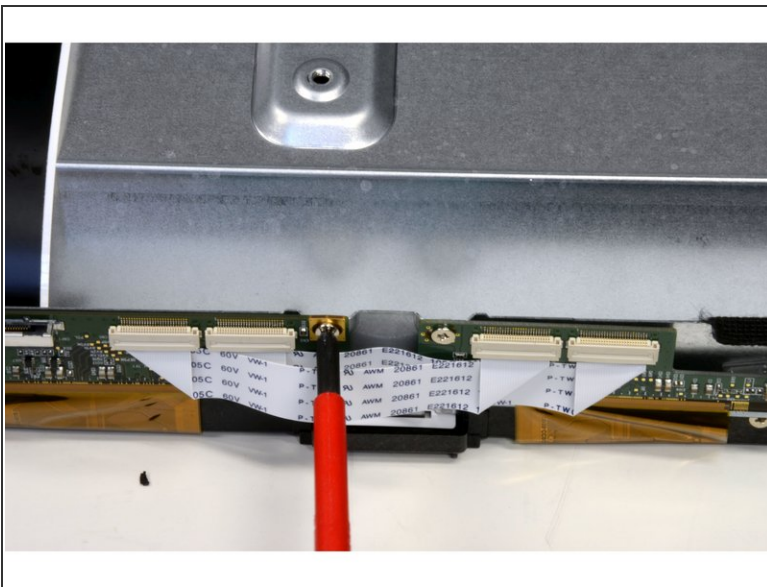
- Using PH#2 screwdriver, loose eight screws of plastic and metal mountings used to protect different PCBs.

Step 4 — Removal of Front-Frame



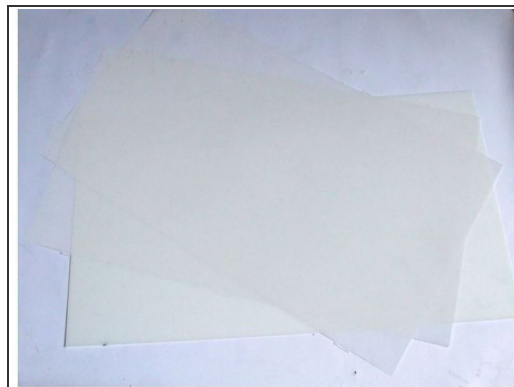
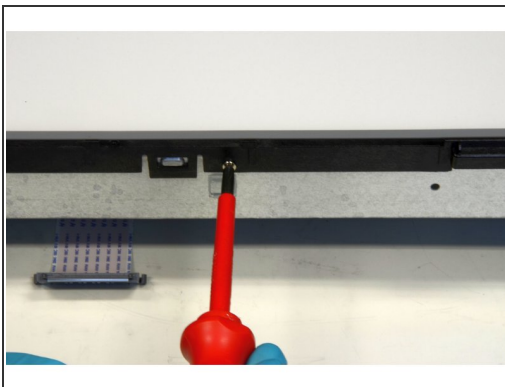
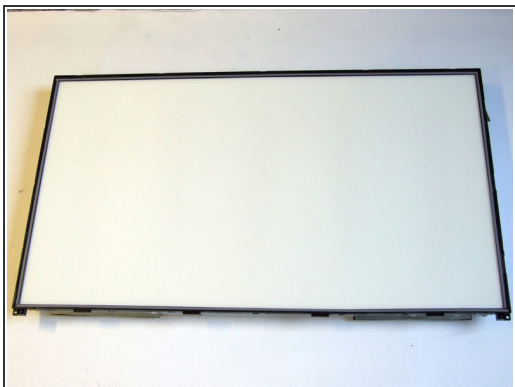
- Using PH#1 screwdriver, loose the four screws of each corner (highlighted in green boxes).
- Manually pull the front-frame out levering the fifteen clips.

Step 5 — Removal of Liquid Crystal Display (LCD)



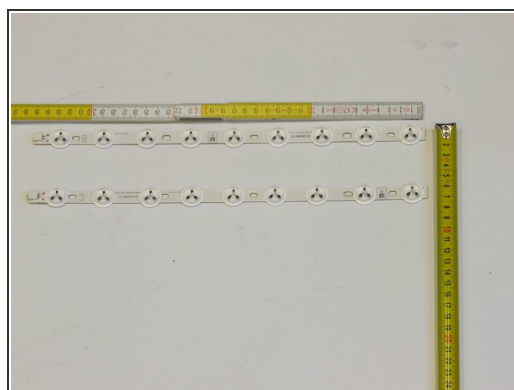
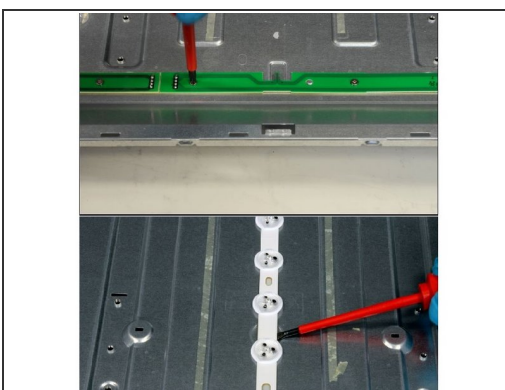
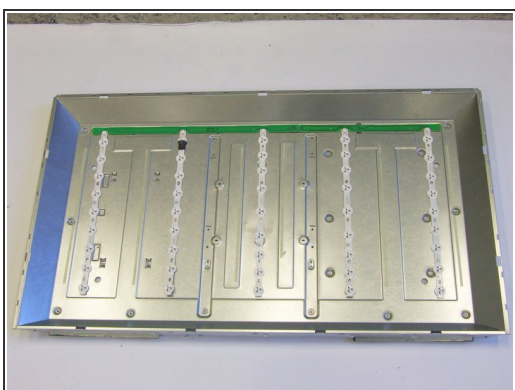
- Using PH#2 screwdriver, loose six screws that fix the LCD PCBs to the back metal-casing.
- Carefully turn the screen up and remove the freed LCD panel.

Step 6 — Removal of Polarized Foils



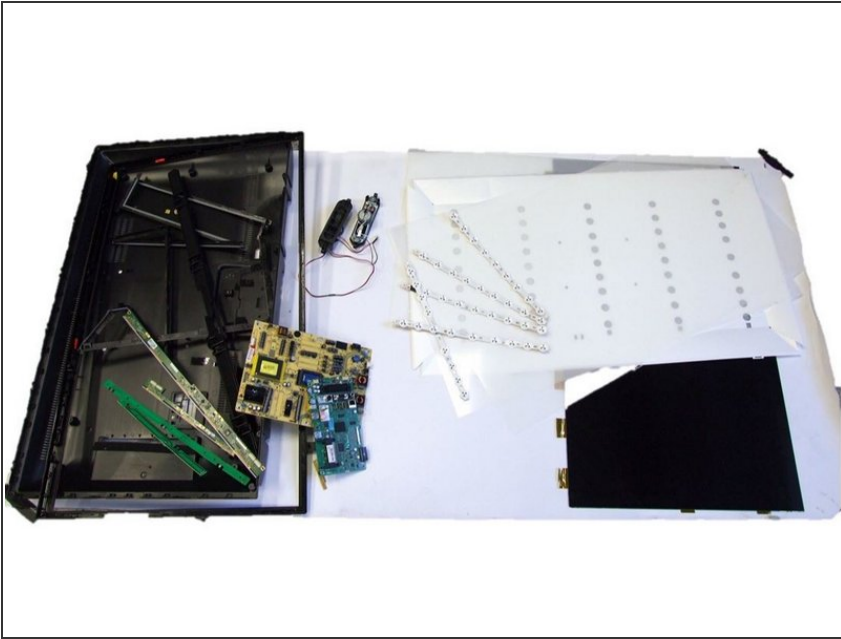
- Using PH#1 screwdriver, begin to loose the eighteen screws located in the exterior of the inner frame.
- Starting from the right corner, continue to work your way counterclockwise.
- Manually pull the frame off by levering the twenty-five clips.
- Remove the already exposed polarized foils.

Step 7 — Removal of Backlights (LED)



- Using PH#1 screwdriver, loose the five screws of the two connection PCBs.
- Using slotted screwdriver, lever the LED PCBs one by one.

Step 8 — TV Dismantling Fractions



- All fractions obtained after TV dismantling.