

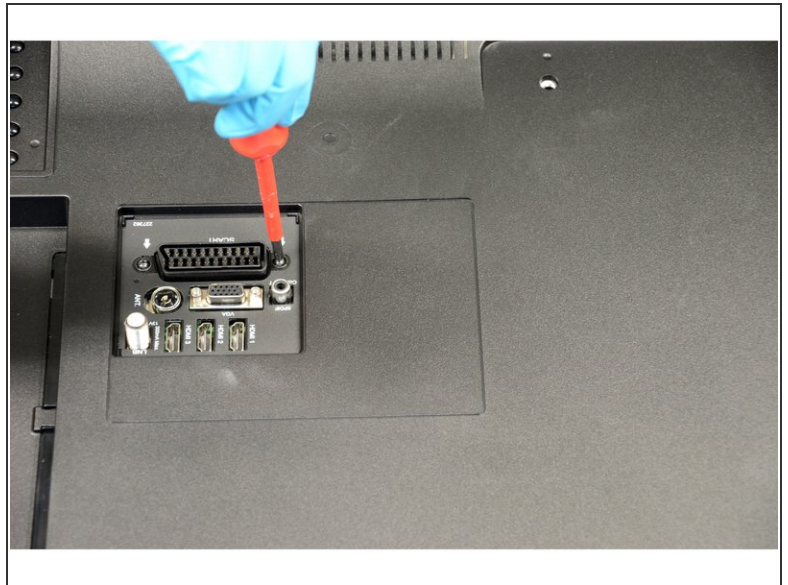
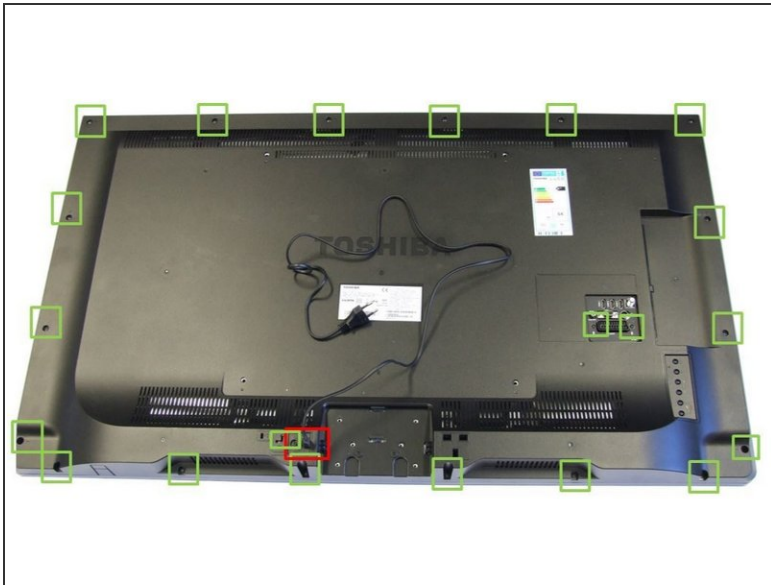


Toshiba 48L1443DG TV set

Written By: Amaia

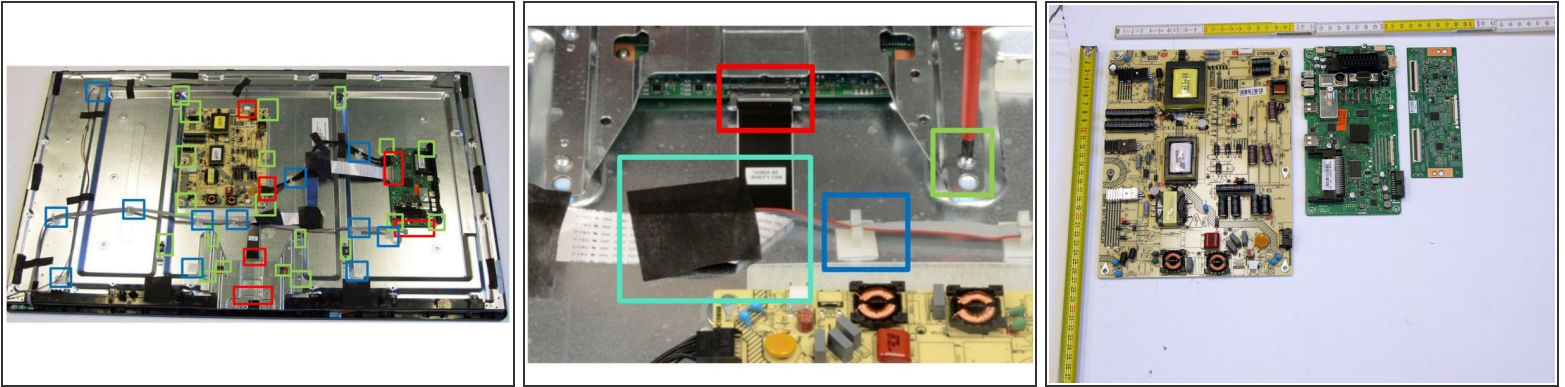


Step 1 — Opening



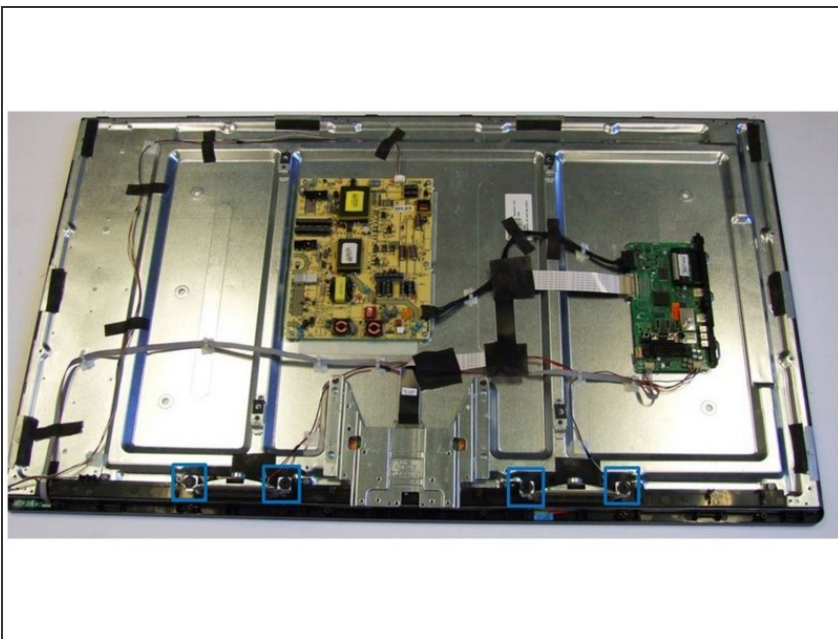
- Place the TV Screen side-down.
- Using PH#2 screwdriver, begin to loose the screws of the back-casing (highlighted in green boxes).
- Using PH#1 screwdriver, finish loosening the last two screws which are located in the connectors' square.
- Manually pry twelve clips that fix the back-housing attached to the front frame.
- Disconnect connectors from cables and switchers (red box).
- Remove the plastic back-casing.

Step 2 — Removal of Printed Circuit Boards (PCB)



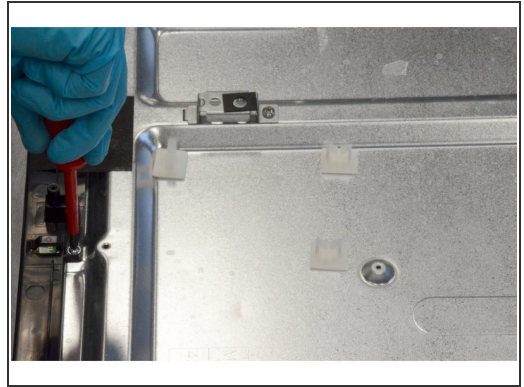
- Remove cables: Disconnect nine connectors (highlighted in red boxes) and twelve clips, and trip off the tapes used to fix cables to the metal casing.
- Remove Printed Circuit Boards (PCB): Using PH#2 screwdriver, loose the four screws of the protective metal part.
- Then, using PH#1 screwdriver, loose the sixteen screws (highlighted in green boxes) of the PCBs.

Step 3 — Removal of Speakers



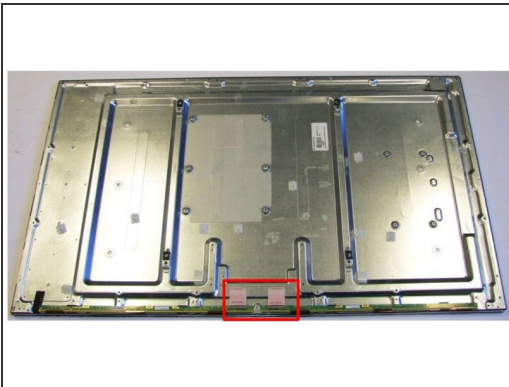
- Remove the speakers by extracting them manually from their mountings (blue boxes).

Step 4 — Removal of Liquid Crystal Display (LCD) 1/2



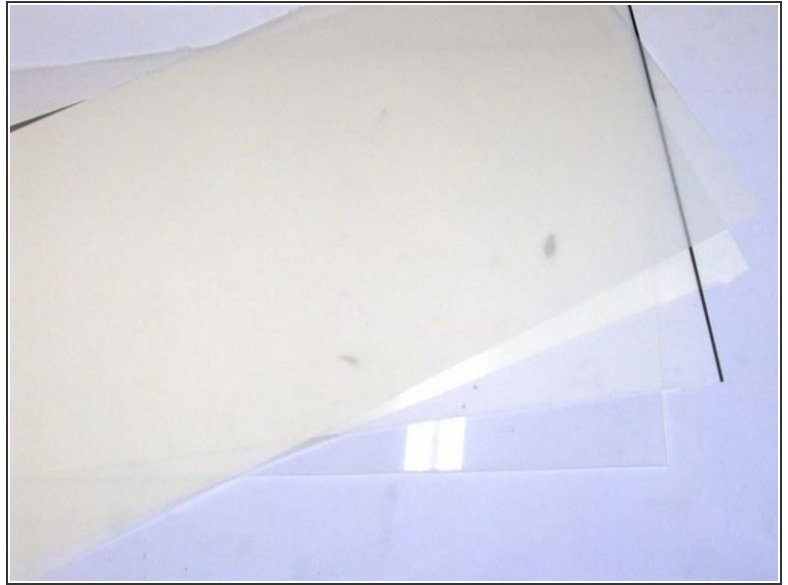
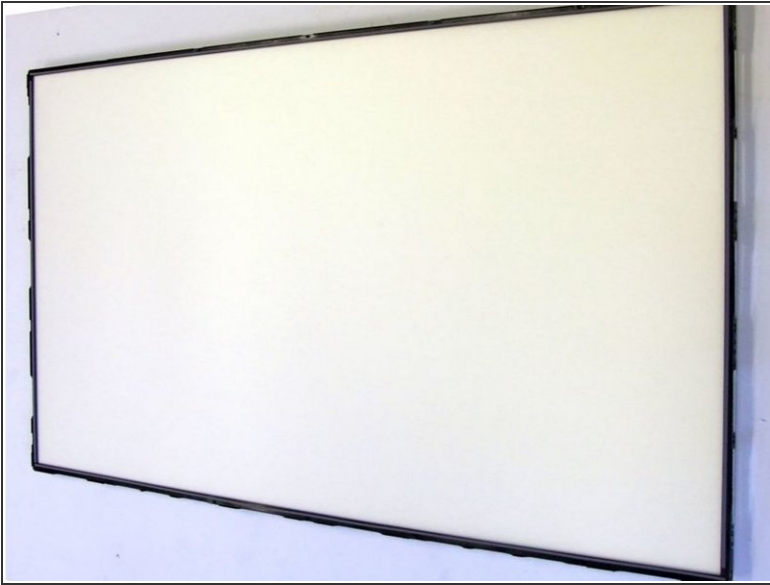
- Trip off adhesives in the sides of the metal back-casing (turquoise box).
- Using PH#1 screwdriver, begin to loose the thirty-three screws of the back-side (green box).

Step 5 — Removal of Liquid Crystal Display (LCD) 2/2



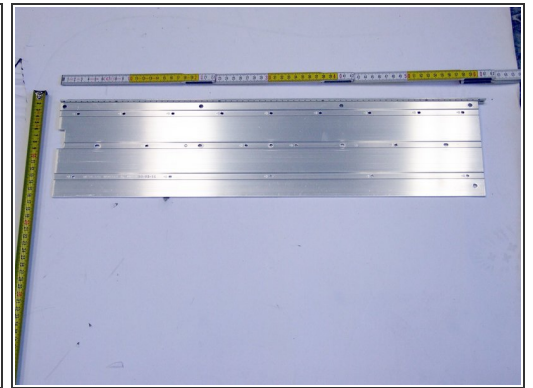
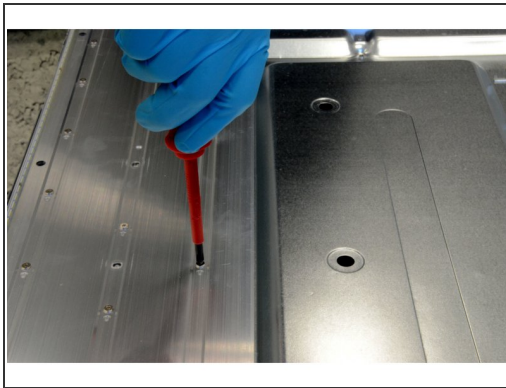
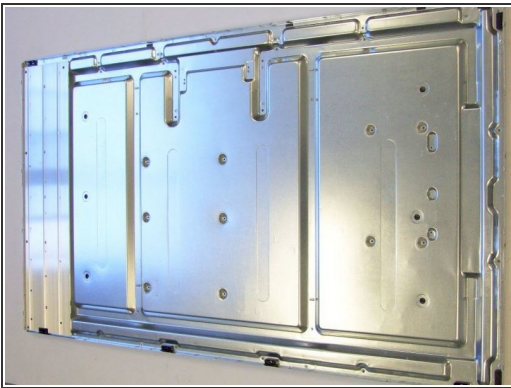
- Continue to work your way around the sides until you can pull off the LCD PCB protective plastic part.
- Then, loose the two connectors of PCBs (red box).
- Carefully place the TV screen upwards and remove the front frame and LCD panel.

Step 6 — Removal of Polarized Foils



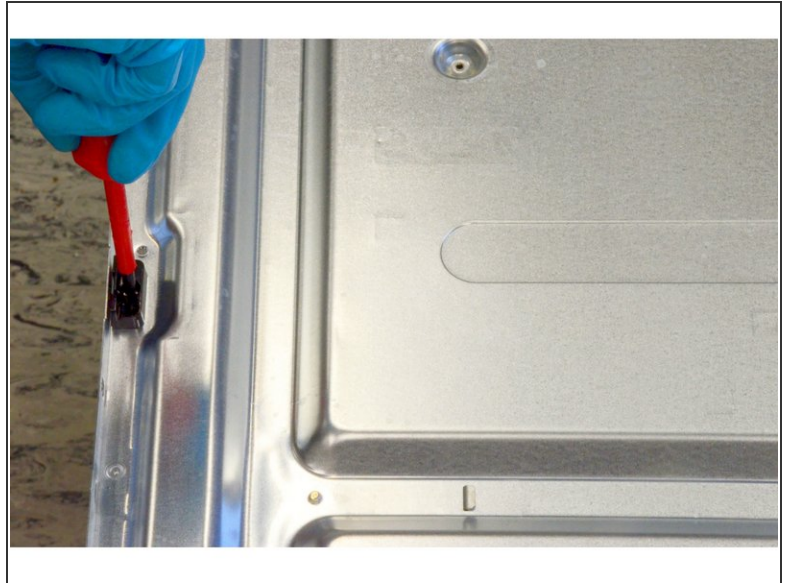
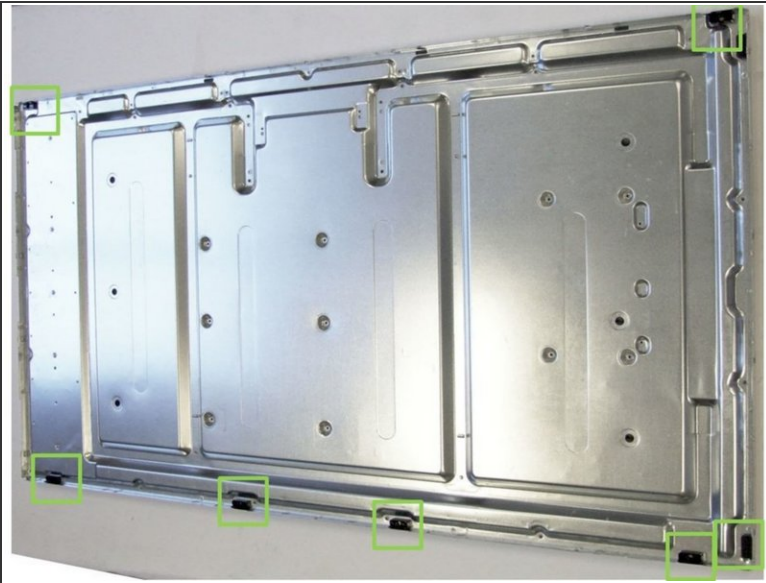
- Manually pull the inner frame off by levering the twenty-four clips.
- Remove the already exposed polarized foils.

Step 7 — Removal of Backlights (LED)



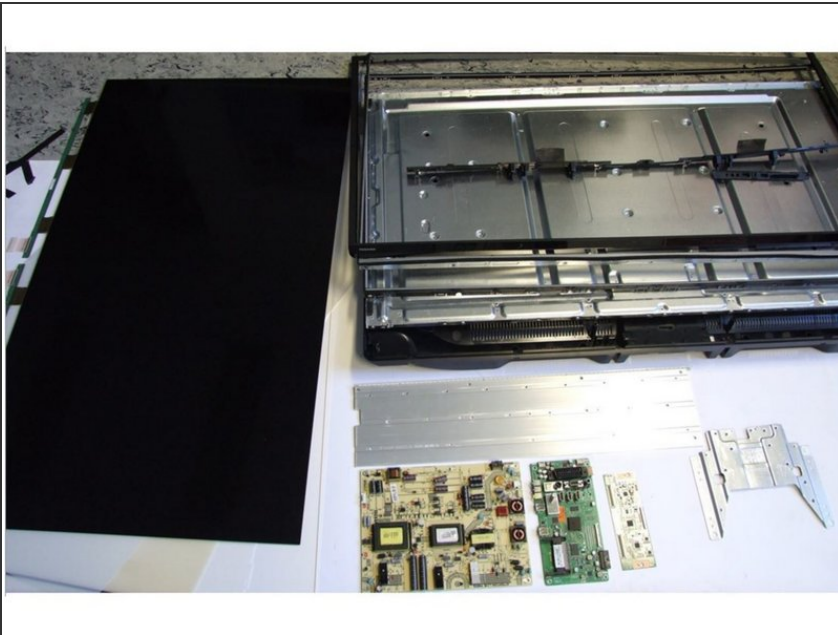
- Using PH#1 screwdriver, loose eighteen screws and remove the metal mounting with the LED PCBs.
- Using slotted screwdriver, separate the PCB from the metal part. Note that this step is destructive.

Step 8 — Removal of Small Plastic Parts



- Remove plastic parts with PH#1 screwdriver and unscrew seven screws used to attach them to the metal-casing.

Step 9 — TV Dismantling Fractions



- All fractions obtained after TV dismantling.