

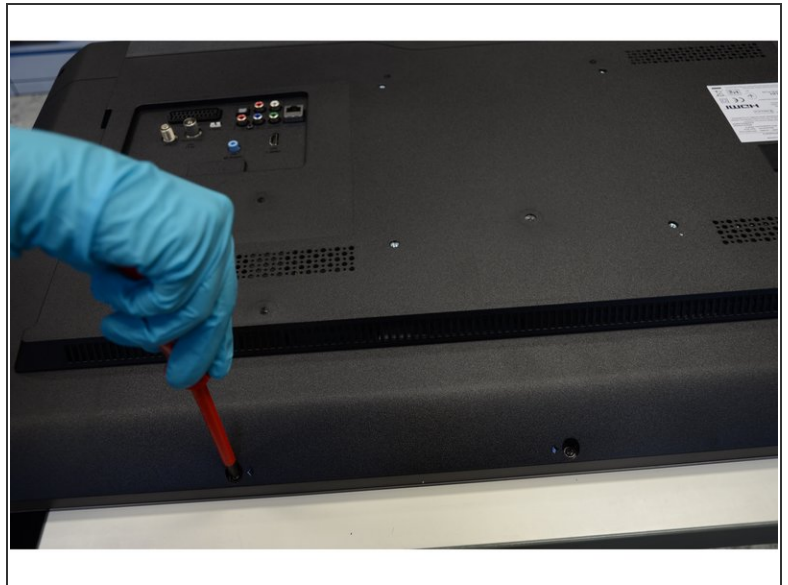
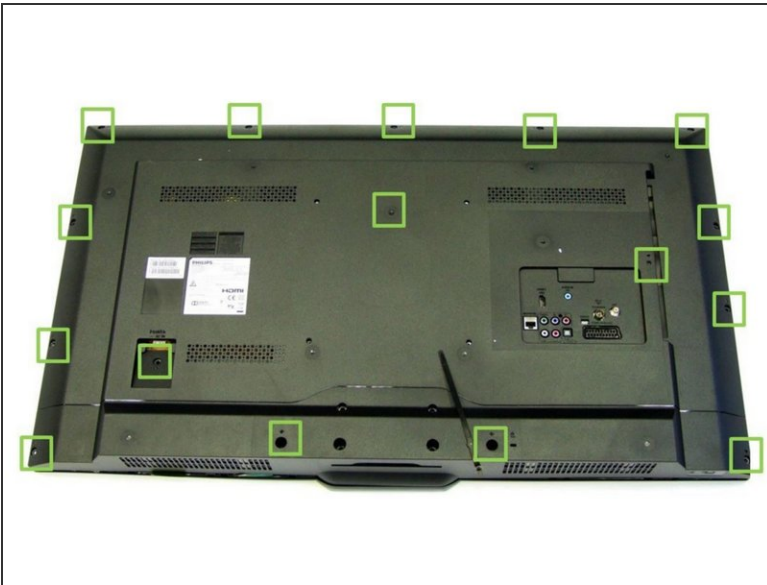


# Philips 40PFK4509/12 TV set

Written By: Amaia

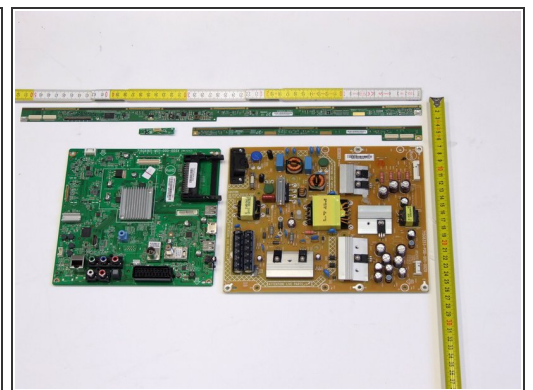
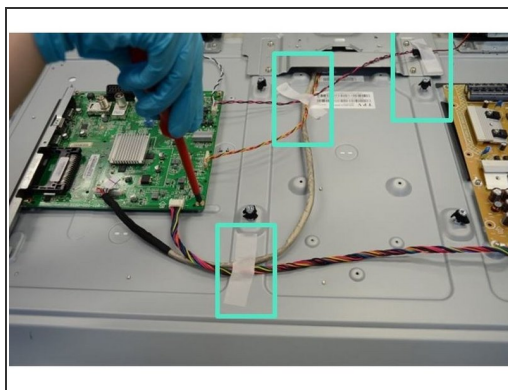
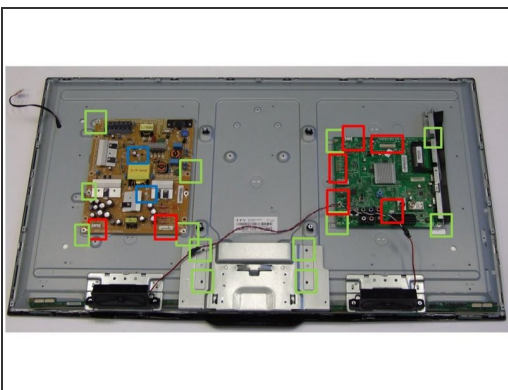


## Step 1 — Opening



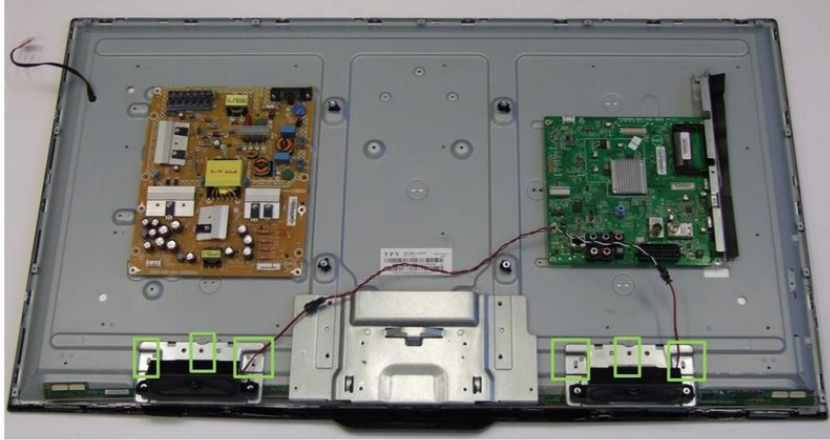
- Start the TV opening from the back side.
- The back cover is fastened with sixteen Philips #2 screws (green marking).
- Next, to obtain the plastic back cover, release manually forty-two clips (no tools required).

## Step 2 — Removal of Printed Circuit Boards (PCB)



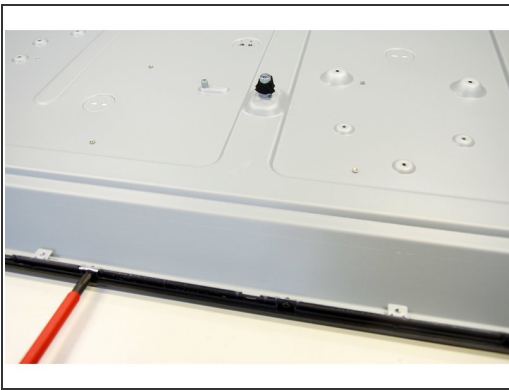
- Detach all eight connectors (red boxes) and rip off the tapes used to fix the cables to the metal casing.
- To remove the PCBs loose the thirteen PH#2 screws (green boxes).
- Next, release the two clips (highlighted in blue boxes) and remove the PCBs.

### Step 3 — Removal of Speakers



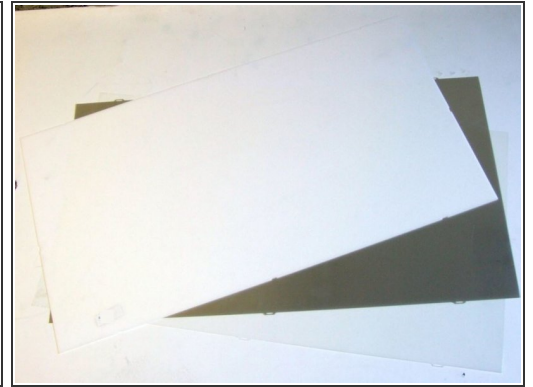
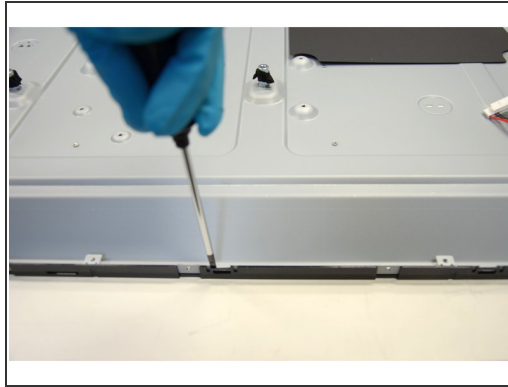
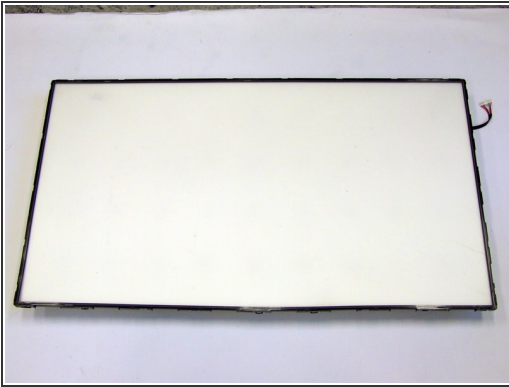
- Using PH#2 screwdriver, loose six screws (green boxes).
- Remove the Speakers.

### Step 4 — Removal of Liquid Crystal Display (LCD)



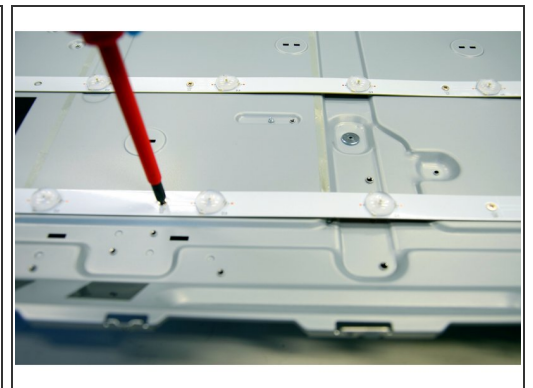
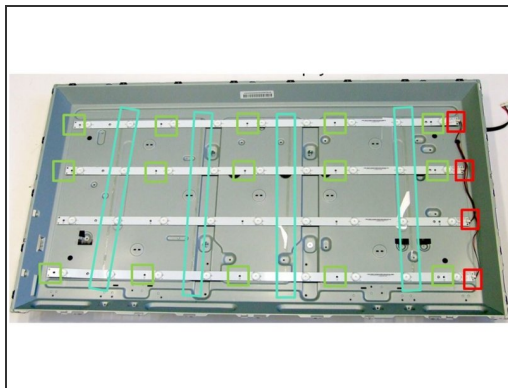
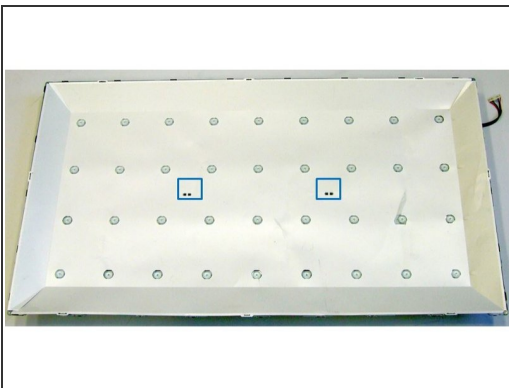
- To remove the front frame, loose twenty-seven PH#2.
- Remove the Liquid Crystal Display (LCD).

## Step 5 — Removal of Polarized Foils



- Using slotted screwdriver, begin to lever the twenty-three clips of the inner frame starting at the bottom of the TV.
- Continue to work your way around the frame counterclockwise until you can pull the frame off.
- Remove the polarized foils.

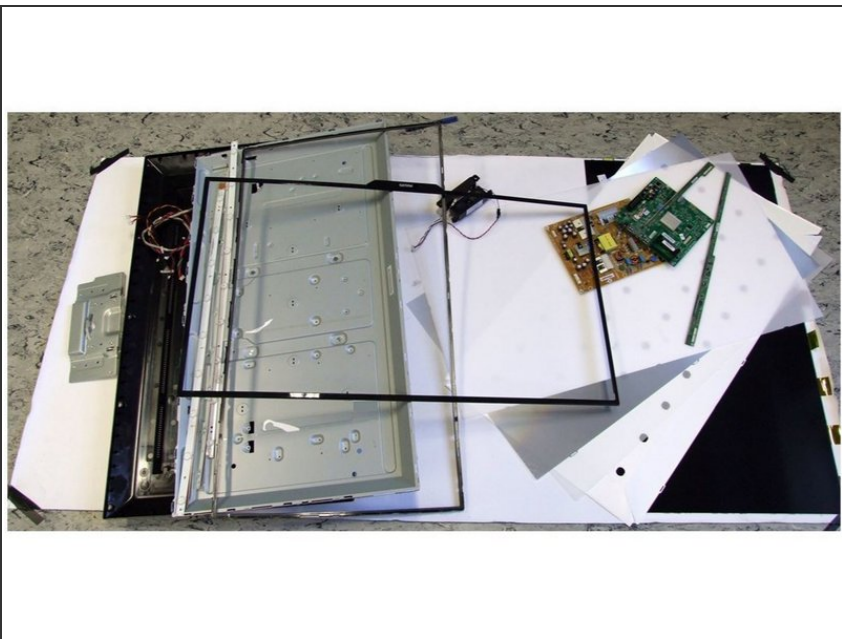
## Step 6 — Removal of Backlights (LED)



- Using slotted screwdriver, loose the two clips (blue boxes). To access the backlight, remove the protective foil first.
- Using PH#2 screwdriver, loose five screws per LED stripe (green boxes).
- Manually disconnect the four cable connectors (red boxes) and separate each PCB.



## Step 7 — TV Dismantling Fractions



- All fractions obtained after deep level TV dismantling.