



Vestel 40" TV set

Written By: Amaia

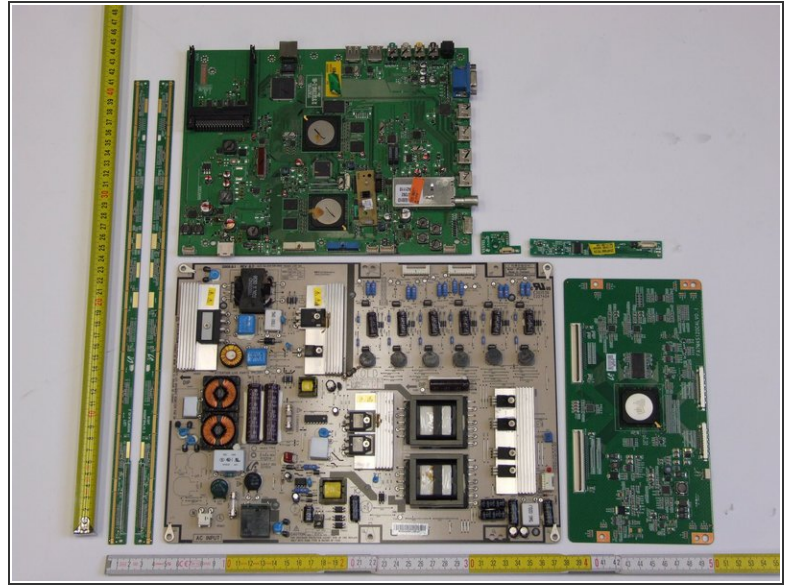


Step 1 — Opening



- Place the TV screen side-down.
- Using PH#2 screwdriver, begin to loose the twenty-one screws of the back-casing (highlighted in green boxes).
- Work your way around the TV until you can pull the back cover off.

Step 2 — Removal of Printed Circuit Boards (PCB)



- Remove cables: Disconnect all fifteen connectors (highlighted in red boxes) and separate the tapes used to fix cables to the metal-casing.
- Remove Printed Circuit Boards (PCBs):
 - Using PH#2 screwdriver, begin to loose the four screws of the protective metal mounting (highlighted in green boxes).
 - Using PH#1 screwdriver, continue to loose the rest of the twenty screws that fix the PCB to the metal-casing.

Step 3 — Removal of Speakers



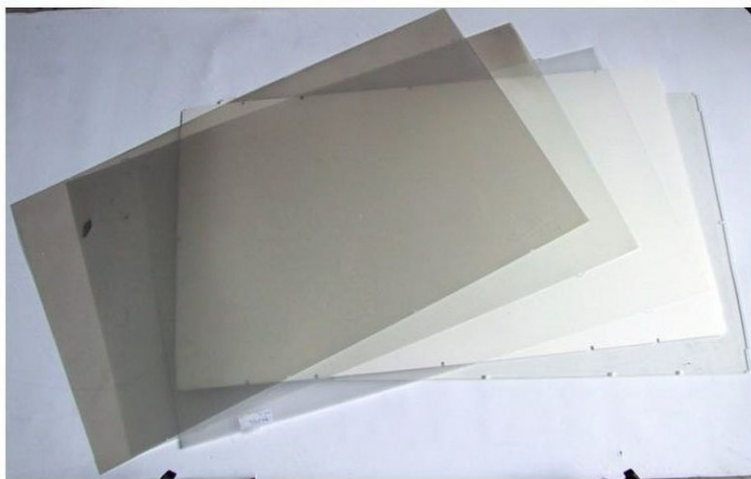
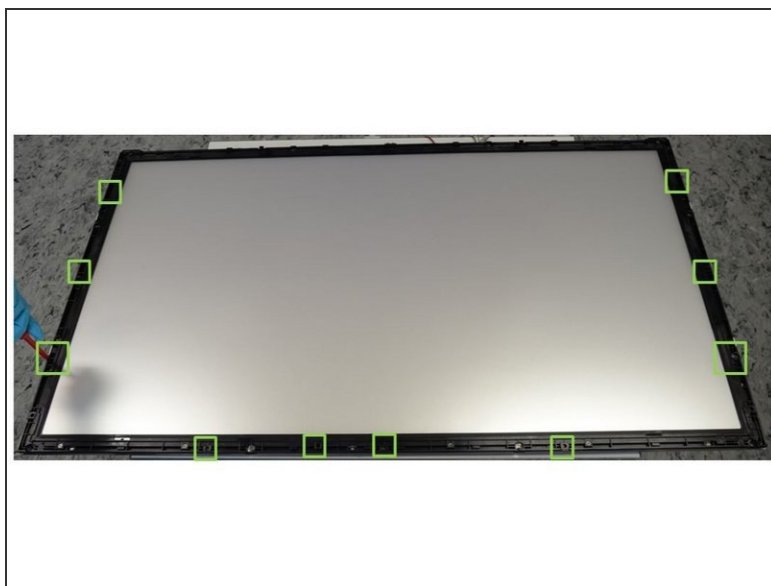
- Remove the speakers by extracting them manually from their mountings (blue boxes).

Step 4 — Removal of Liquid Crystal Display (LCD)



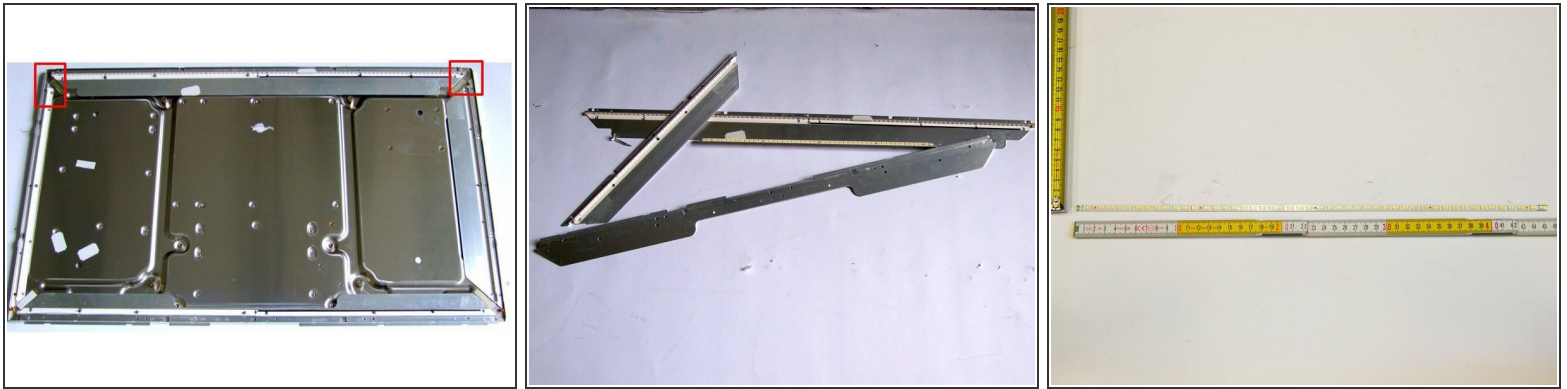
- Place the TV screen side-up.
- Remove the front-frame that is already exposed.
- Using PH#1 screwdriver, begin to loose the twelve screws of the inner frame from the left corner (green boxes).
- Continue to work your way around the frame counterclockwise until you can pull the frame off.
- Remove the already exposed LCD panel.

Step 5 — Removal of Polarized Foils



- Using PH#1 screwdriver, begin to loose the ten screws of the plastic frame from the left corner (green boxes).
- Continue to work your way around the frame counterclockwise until you can pull it off.
- Remove the already exposed polarized foils.

Step 6 — Removal of Backlights (LED)



- Use your fingers to pry open the cable connectors (red boxes).
- Using PH#1 screwdriver, loose the eighteen screws and obtain the metal-mountings where the LED PCBs are located.
- Using PH#0 screwdriver, loose five screws per each of the six LED PCBs.
- Then, use slotted screwdriver to pry open the PCB strips from the metal-mountings. Note that this step is destructive.

Step 7 — TV Dismantling Fractions



- All fractions obtained after TV dismantling.

