

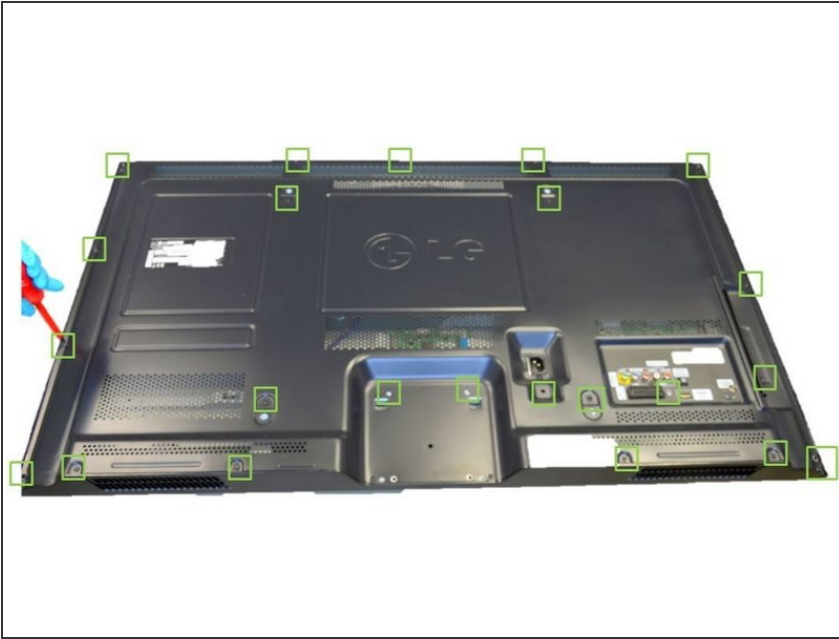


LG 24PN450B TV set

Written By: Amaia

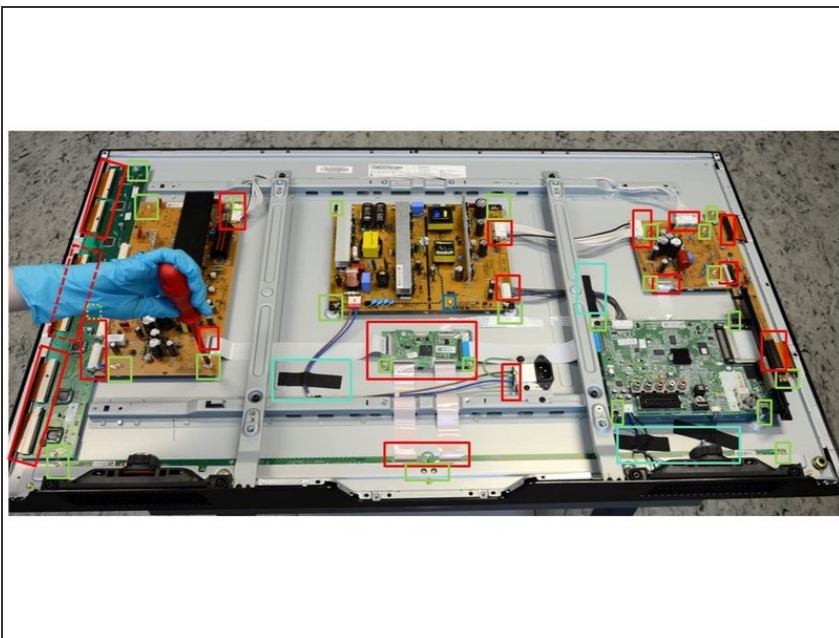


Step 1 — Opening



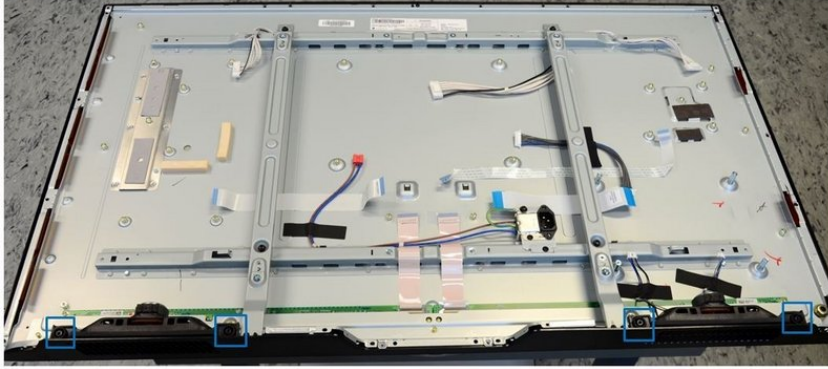
- Start the TV opening from the back side.
- The back cover is fastened with twenty-three PH#2 screws (green marking).
- Work your way around the TV until you can pull off the back cover.

Step 2 — Removal of Printed Circuit Boards (PCB)



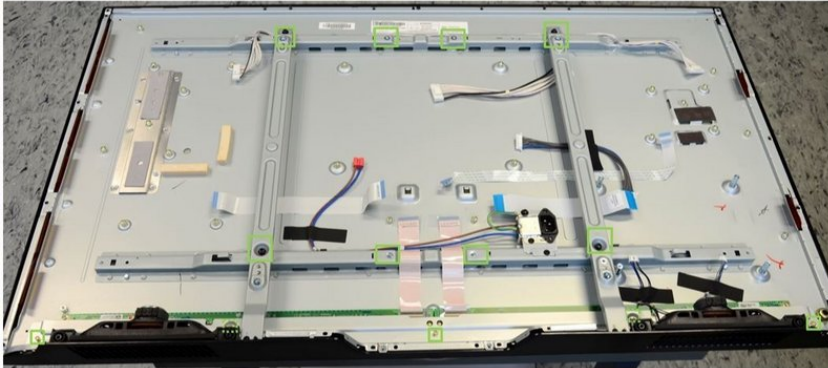
- Disconnect all thirty-one connectors (highlighted in red boxes) and rip off the tapes (highlighted in blue boxes) used to fix the connectors.
- Remove Printed Circuit Boards (PCB):
 - Using PH#2 screwdriver, begin to loose the twenty screws.
 - Using PH#1 screwdriver, loose the last seven screws and release the side PCBs.

Step 3 — Removal of Speakers



- Remove the speakers by extracting them manually from their mountings (blue boxes).

Step 4 — Removal of Metal Parts



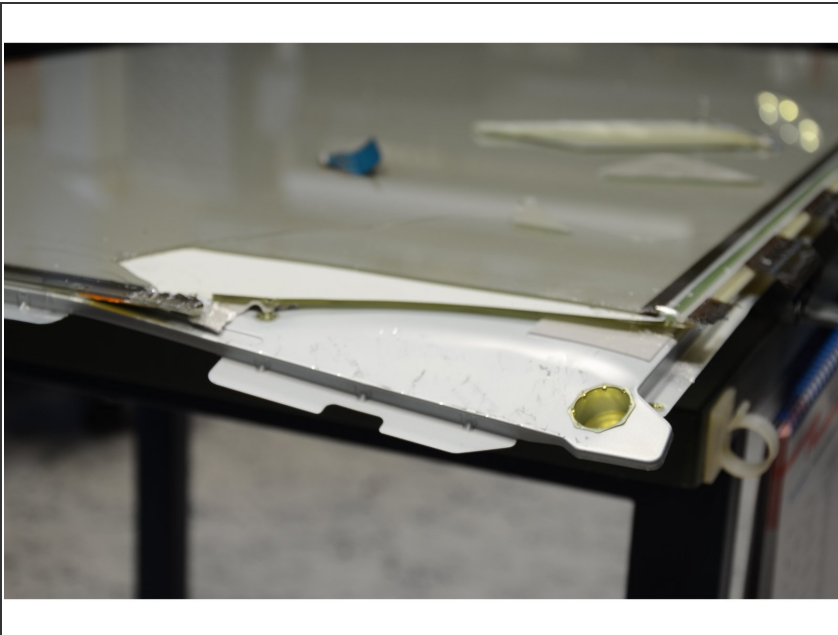
- Next, remove the metal plates using PH#2 screwdriver (thirteen screws).

Step 5 — Removal of Display Unit (Plasma) 1/2



- Remove the front glass frame from the display unit. First, loose six PH#2 screws from the top and two PH#1 screws from the bottom of the frame.

Step 6 — Removal of Display Unit (Plasma) 2/2



- The rest of the plasma panel is glued to a metal plate. Further disassembly not possible.