



Toshiba Satellite M45 Optical Drive Replacement

Written By: Dozuki System



INTRODUCTION

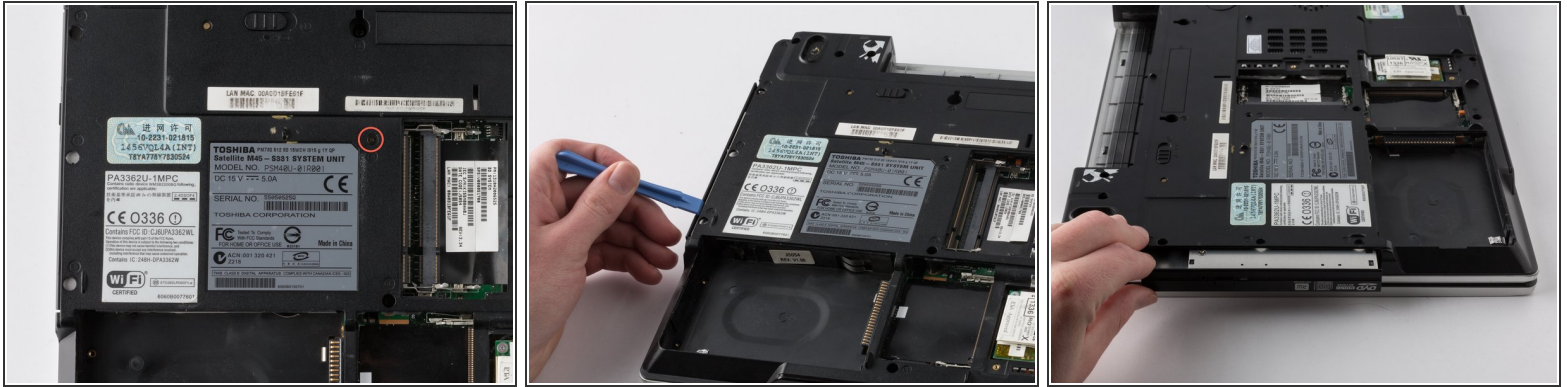
This guide will illustrate how to replace your optical drive.



TOOLS:

- [Phillips #1 Screwdriver](#) (1)
 - [Plastic Opening Tools](#) (1)
-

Step 1 — Toshiba Satellite M45 Optical Drive Replacement



- Remove the ODD screw with a #1 Phillips head screwdriver as indicated in the picture.
- Using a flat edge tool, pry it the drive out of it slot from the side of the casing. You can then use your hands to continue pulling the rest the way out of its slot.

To reassemble your device, follow these instructions in reverse order.