



Xbox 360 S Hard Drive Replacement

Written By: Dozuki System



INTRODUCTION

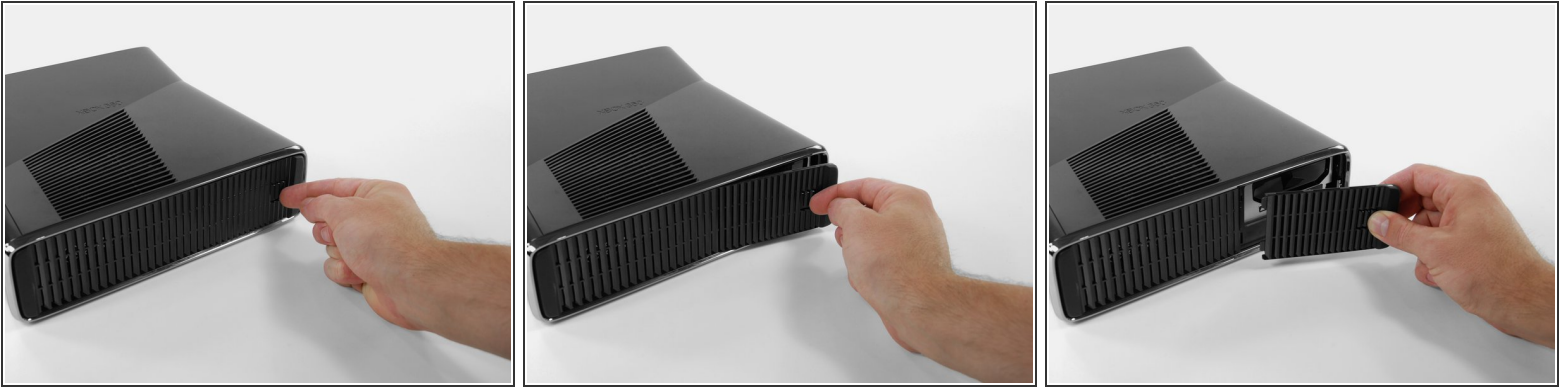
There is no such thing as too much hard drive space, and nothing more frustrating than too little. This guide will show you how to replace your Xbox 360 S hard drive.



PARTS:

- [Xbox 360 S Hard Drive](#) (1)
-

Step 1 — Xbox 360 S Hard Drive Replacement



i Orient the Xbox 360 S so that the bottom of the console is facing toward you.

- Push the latch holding down the hard drive cover to the left.
- Pull the hard drive cover away from the console.

Step 2



- Firmly grasp the fabric tab labeled "250 GB" attached to the hard drive.
- Pull the hard drive straight out of the console.

i The fabric tab is attached to a catch further inside the hard drive housing. It will take some force to pull the hard drive out.

To reassemble your device, follow these instructions in reverse order.